



Plusline ES Small

Plusline ES Small 118mm 2y 160W R7s 230V 1BB

Mains-voltage halogen linear lamp with superior energy efficiency. Offers very long lifetime and crisp halogen light. Ideal solution for decorative luminaires.

Ташев-Галвинг ООД
www.tashev-galving.com

PHILIPS

sense and simplicity

Ташев Галвинг ООД
www.tashev-galving.com

Product data

• General Characteristics

Cap-Base	R7s
Bulb	T4 [T4: .434 inch / 11mm]
Bulb Finish	Clear
Operating Position	any [Any or Universal (U)]
Life to 50% failures	2000 hr
Rated Lifetime (hours)	2000 hr
Rated Lifetime (years)	2 an

• Light Technical Characteristics

Color Rendering Index	100 Ra8
Color Temperature	2900 K
Color Temperature Technical	2900 K
Luminous flux lamp	3100 Lm
Luminous Efficacy Lamp	19.4 Lm/W

• Electrical Characteristics

Lamp Wattage	160 W
Lamp Wattage Technical	160 W
Voltage	230 V
Lamp Current	0.70 A
Dimmable	Yes

• Environmental Characteristics

Energy Efficiency Label (EEL)	C
Mercury (Hg) Content	0.0 mg

• Luminaire Design Requirements

Pinch Temperature	350 (max) C
Bulb Temperature	900 (max) C

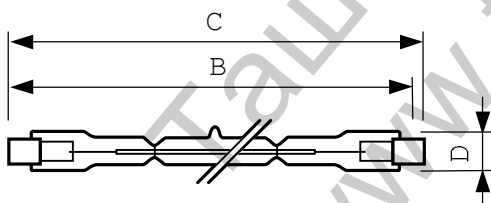
• Product Dimensions

Insertion Length B	112.6 (min), 114.2 (nom), 115.8 (max) mm
Overall Length C	118 (max) mm
Diameter D	12 (max) mm

• Product Data

Order code	852196 00
Full product code	872790085219600
Full product name	Plusline ES Small 118mm 2y 160W R7s 230V 1BB
Order product name	Plusline ES 118mm 2y 160W R7s 230V 1BB
Pieces per pack	1
Packing configuration	10X10CC
Packs per outerbox	100
Bar code on pack - EAN1	8727900852196
Bar code on intermediate packing - EAN2	8727900852202
Bar code on outerbox - EAN3	8727900852219
Logistic code(s) - 12NC	924587544210
Net weight per piece	9.000 gr

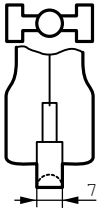
Dimensional drawing



R7s

Product	B (Min)	B (Norm)	B (Max)	C (Max)	D (Max)
DESmall 118mm 2y 160W R7s 230V T11 CL	112.6	114.2	115.8	118	12

Dimensional drawing



R7s

Ташев-Галвинг ООД
www.tashev-galving.com



© 2012 Koninklijke Philips Electronics N.V.
All rights reserved.

Specifications are subject to change without notice. Trademarks are the property of Koninklijke Philips Electronics N.V. or their respective owners.

www.philips.com/lighting

2012, August 4
data subject to change

Ташев Галвинг ООД
www.tashev-galving.com